



JANUARY





FEBRUARY





MARCH





APRIL



MOM'S OWN MILK
EST. 2013



MAY





JUNE





JULY





AUGUST





SEPTEMBER





OCTOBER





NOVEMBER





DECEMBER





JANUARY



FEBRUARY



MARCH



APRIL



DECEMBER



Glass

MAY



NOVEMBER



Birthstones

JUNE



OCTOBER



SEPTEMBER



JULY



AUGUST



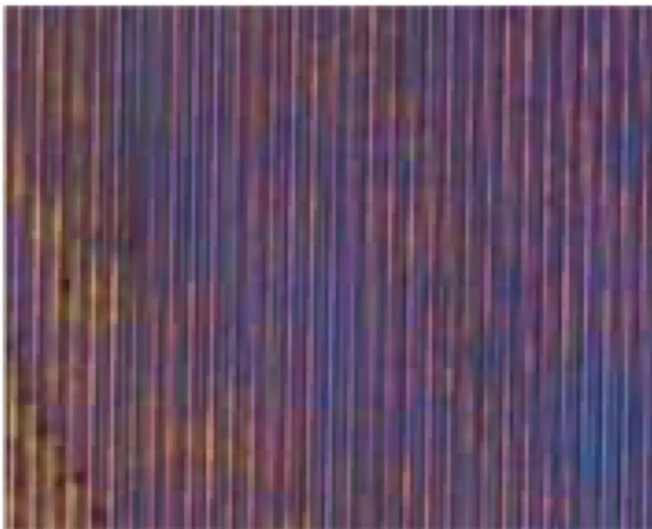
Irid & Textured Sheet



Black



Black Herringbone Ripple



Black Reed



Aventurine Blue, Clear

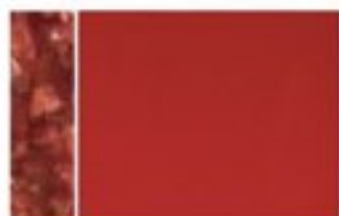
002140 0021

OPALESCENT

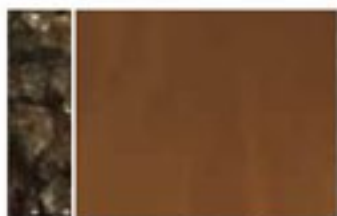
Sample key: Frit shown is Medium mesh.



Deep Red
000224 ●



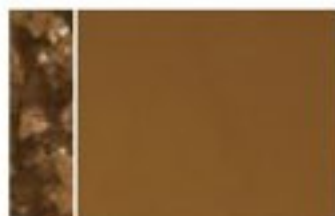
Red
000124 ●



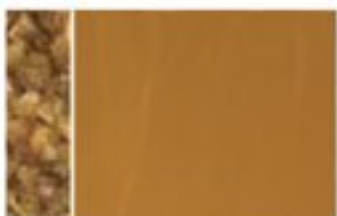
Woodland Brown
000203 ●



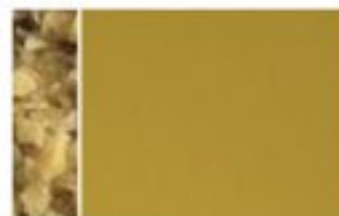
Cinnabar
000309 ●



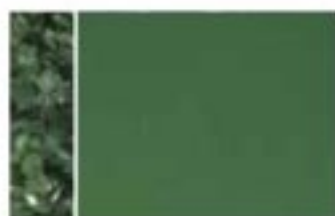
Umber
000310 ●



Butterscotch
000337 ●



Golden Green
000227 ●



Dark Forest Green
000141



Mineral Green
000117



Olive Green
000212



Jade Green
000145



Teal Green
000144



Steel Blue
000146



Indigo Blue
000148

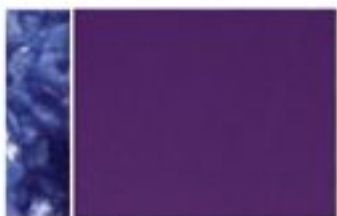


Deep Cobalt Blue
000147

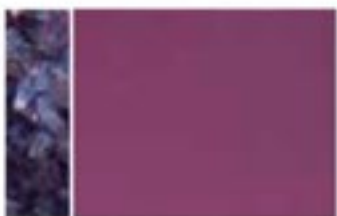


Cobalt Blue
000114

Before firing
Color after firing
to a full fuse.



Gold Purple
000334 ●



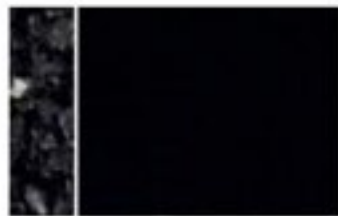
Plum
000332 ●



Dusty Lilac
000303



Neo-Lavender
000142 ♣



Black
000100



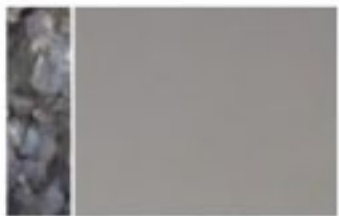
Deep Gray
000336



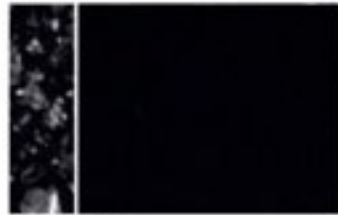
Deco Gray
000136



Mink
000119



Elephant Gray
000206



Stiff Black
000101



Slate Gray
000236



Driftwood Gray
000132



Cream
000420



Warm White
000920



Reactive Cloud
000009



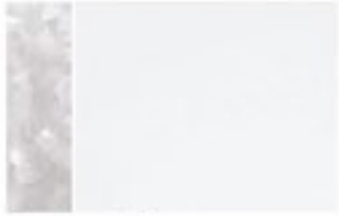
Opaline
000403 ●



Translucent White
000243 ●



White
000113



Opaque White
000013



Tomato Red
000024 ●



Pimento Red
000225 ●



Salmon Pink
000305 ●



Pink
000301 ●



Petal Pink
000421



Burnt Orange
000329



Orange
000125 ●



Tangerine Orange
000025 ●



Pumpkin Orange
000321 ●



Light Peach Cream
000034



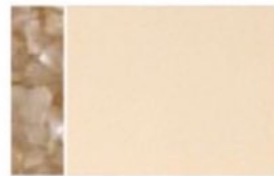
Marigold Yellow
000320 ●



Sunflower Yellow
000220 ●



Canary Yellow
000120 ●



Marzipan
000138 ●



French Vanilla
000137



Pea Pod
000312



Spring Green
000126 ●



Celadon
000207



Mint Green
000112



Artichoke
000131



Dusty Blue
000208



Egyptian Blue
000164



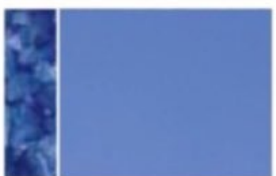
Light Cyan
000216



Turquoise Blue
000116



Powder Blue
000108



Periwinkle
000118



Chartreuse

001126 ●



Green Tea Tint

001826



Grass Green Tint

001807



Olive Smoke Tint

001867



Light Aquamarine Blue

001408



Spruce Green Tint

001841



Aqua Blue Tint

001808



Juniper Blue Tint

001806



Lt Neo-Lavender Shift Tint

001842 ♪



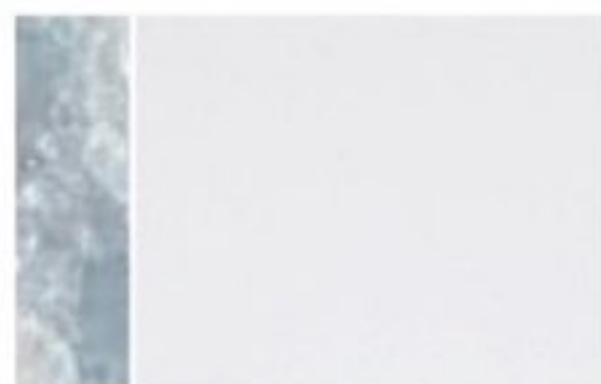
Indigo Tint

001818



Gray Blue Tint

001864



Reactive Ice

001009



Crystal Clear

001401

Before firing
Color after firing to a full fuse.



Olive Green
001141



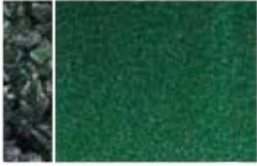
Pine Green
001241 ●



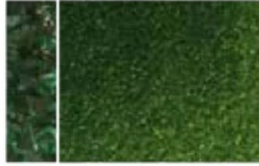
Fern Green
001207 ●



Spring Green
001426



Aventurine Green
001112



Light Aventurine Green
001412



Kelly Green
001145 ←



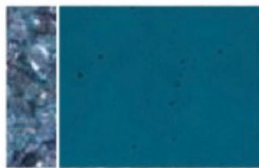
Emerald Green
001417



Light Green
001107 ←



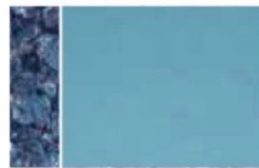
Aventurine Blue
001140



Aquamarine Blue
001108



Sea Blue
001444



Steel Blue
001406



Light Turquoise Blue
001416



Deep Royal Purple
001128



Midnight Blue
001118



Deep Royal Blue
001114



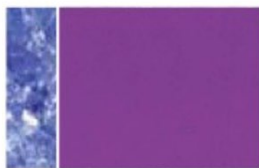
True Blue
001464 ←



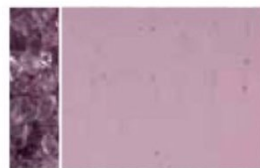
Turquoise Blue
001116 ←



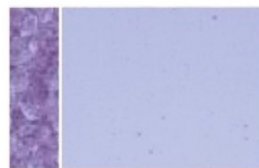
Gold Purple
001334 ● ←



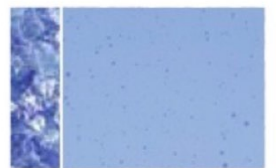
Violet
001234 ● ←



Light Violet
001428



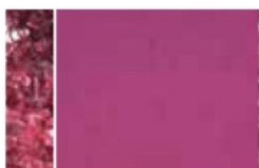
Neo-Lavender Shift
001442 ♣ ←



Light Sky Blue
001414 ←



Deep Plum
001105



Fuchsia
001332 ● ←



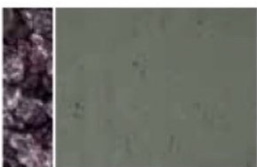
Light Plum
001405



Rhubarb Shift Tint
001859 ♣



Gray Tint
001829



Charcoal Gray
001129



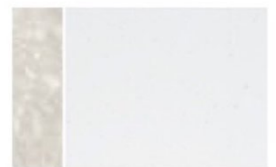
Oregon Gray
001449



Khaki
001439



Light Silver Gray
001429



Clear
001101

TRANSPARENT



Garnet Red
001322 ●



Red
001122 ●



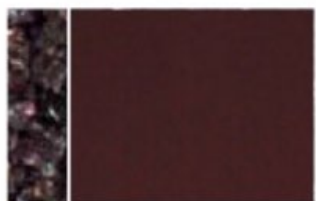
Cranberry Pink
001311 ●



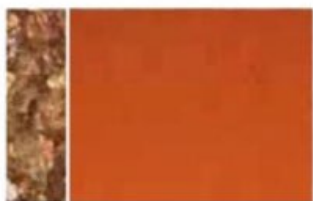
Light Pink
001215 ●



Erbium Pink Tint
001821 ●



Dark Rose Brown
001109



Carnelian
001321 ●



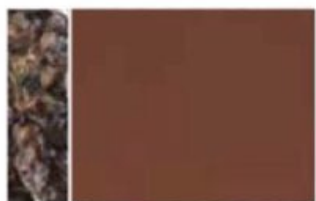
Sunset Coral
001305 ●



Ruby Red Tint
001824 ●



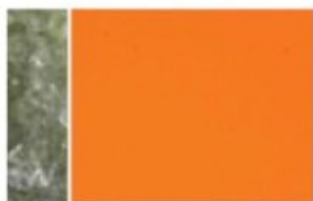
Ruby Pink Tint
001831 ●



Sienna
001119 ●



Orange
001125 ●



Light Orange
001025 ●



Burnt Scarlet Tint
001823 ●



Coral Orange Tint
001834



Tan
001419



Light Bronze
001409 ●



Medium Amber
001137



Marigold Yellow
001320 ●



Yellow
001120 ●



Light Amber
001437



Dark Amber Tint
001838



Medium Amber Tint
001837



Light Amber Tint
001827 ●



Pale Yellow Tint
001820

1.1.4 DICHROIC GLASS IS SUITABLE FOR DICHROIC PENDANTS AND RINGS.

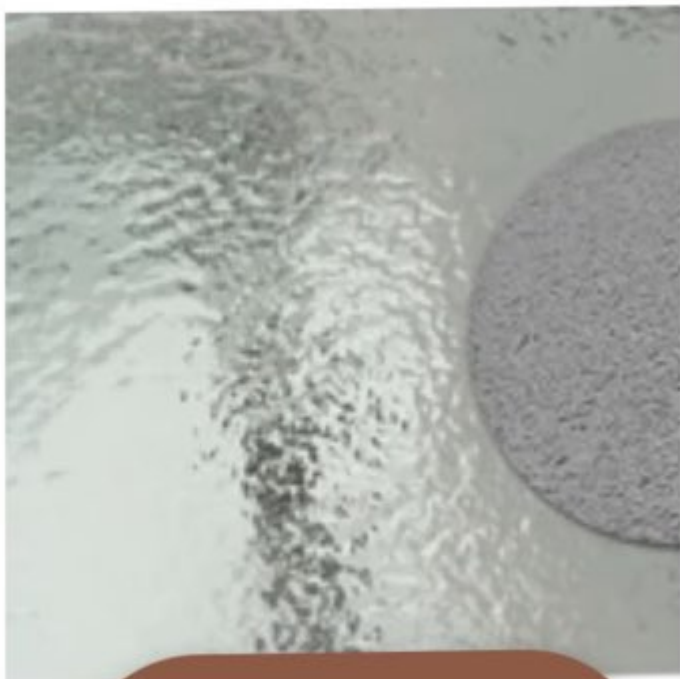
If you have a specific colour in mind, please get in touch with us to discuss your options.

1.1.4.1 Single colours

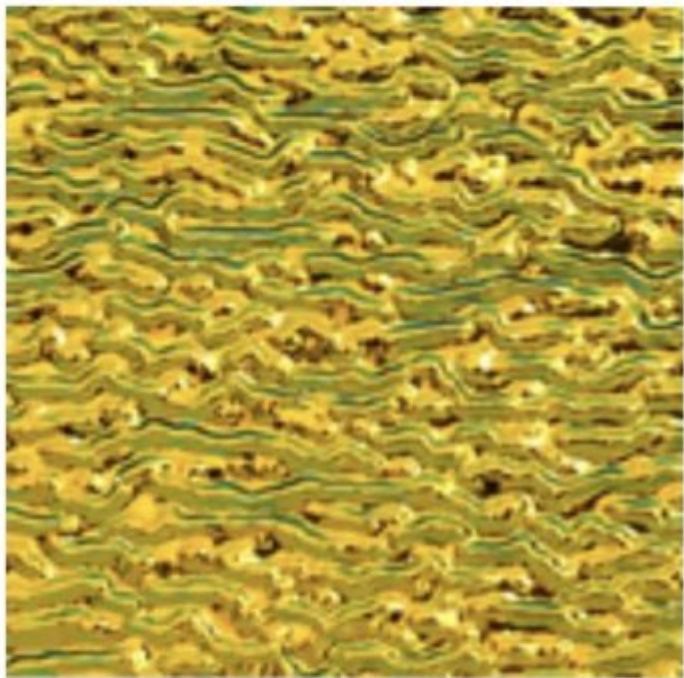
A. Silver on clear / black



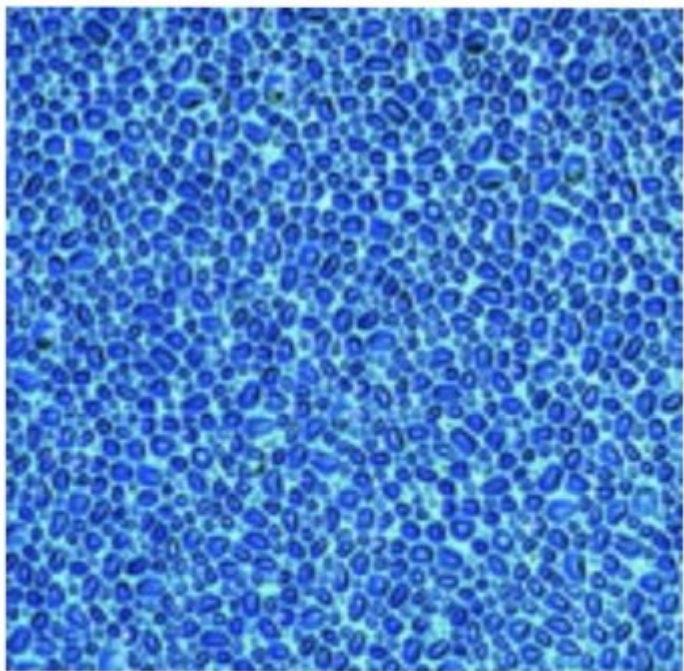
B. Crinklized silver



C. Cyan / copper



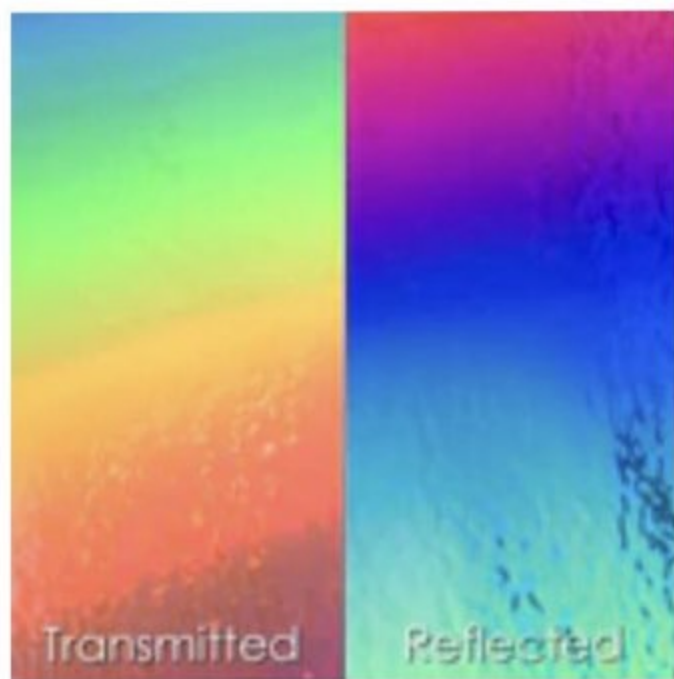
D. Teal / magenta



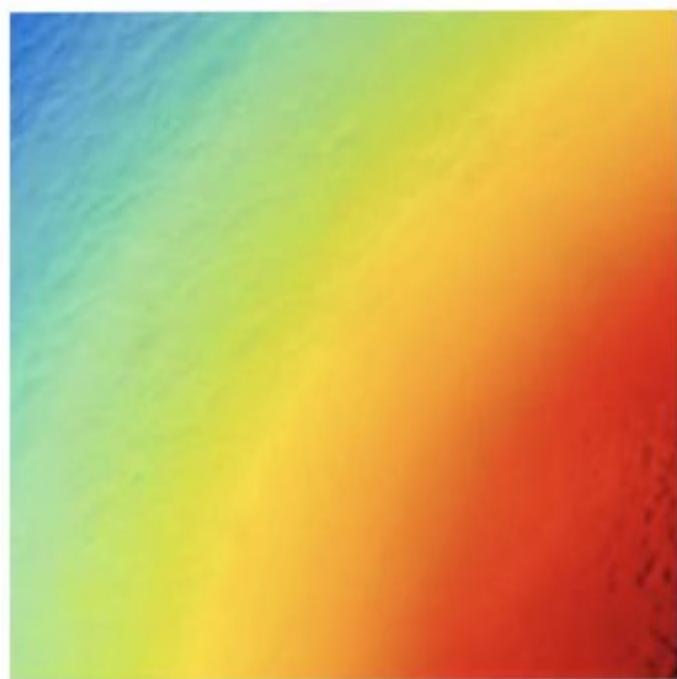
1.1.4.2 Rainbow colours

Note: rainbow colours are available in large sheets and as such, when choosing this, please be mindful that you may not receive an actual complete rainbow in your creation as only part of the glass is used.

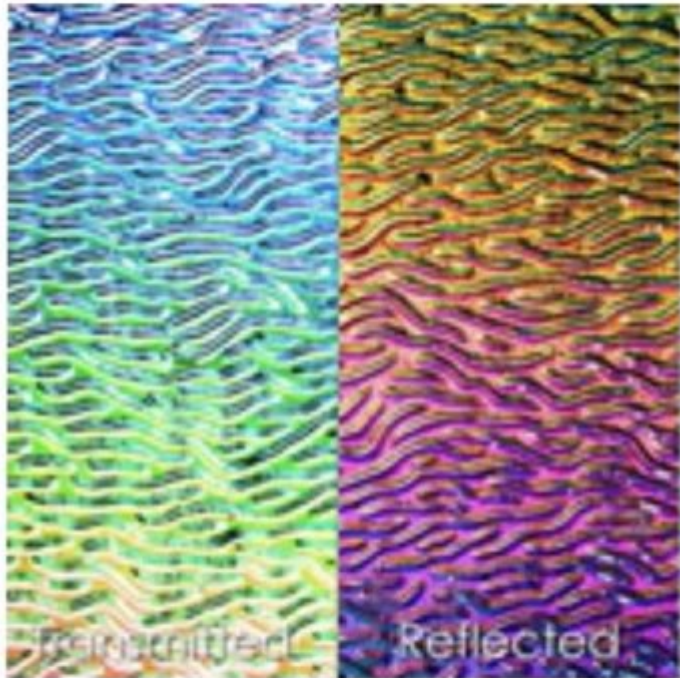
A. Rainbow splinter



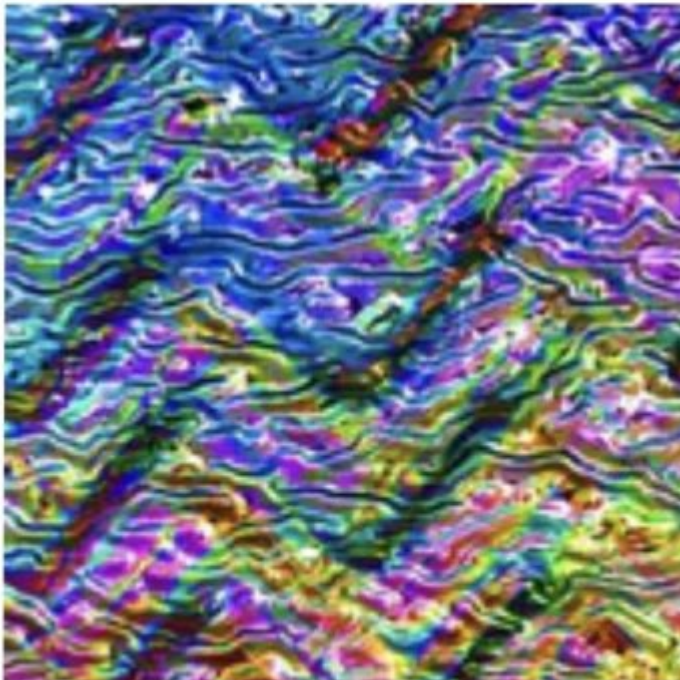
B. Rainbow target



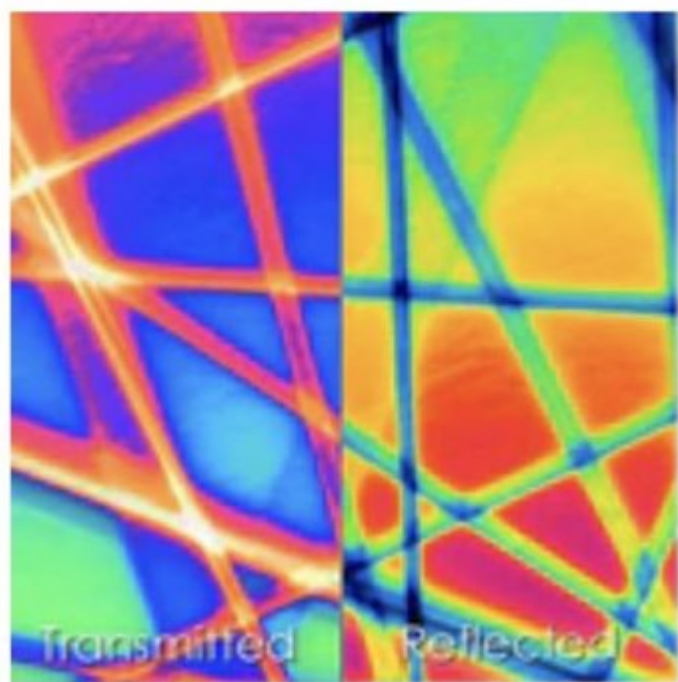
C. Rainbow stream



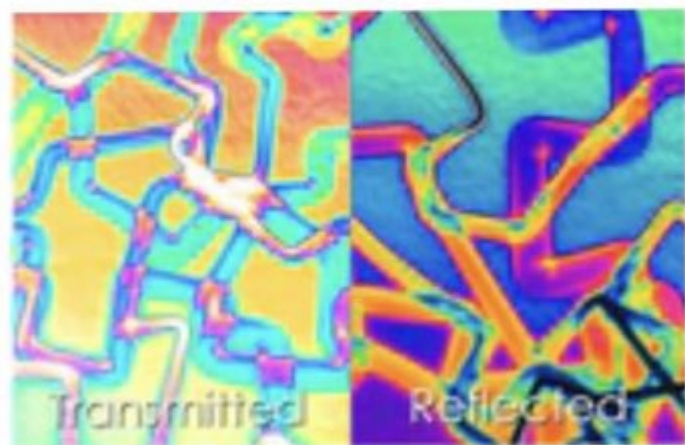
D. Ripple twizzle



E. Stix

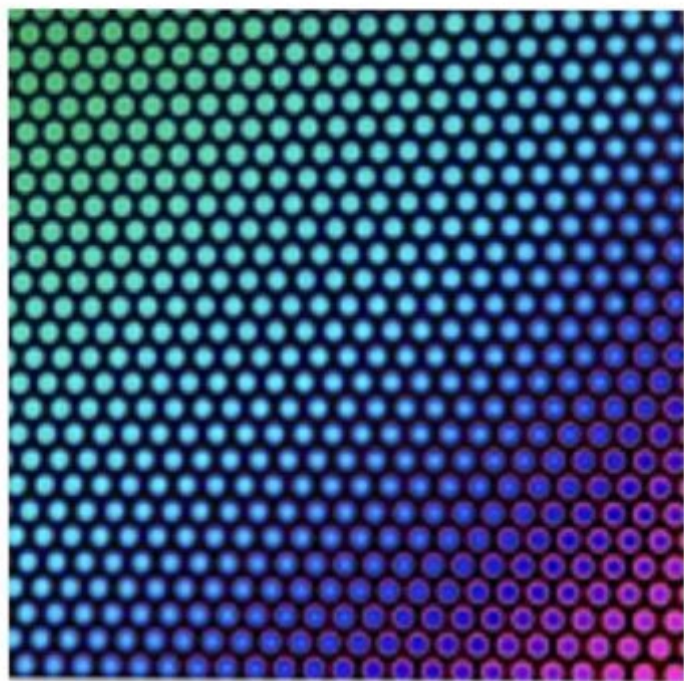


F. Fusion



1.1.4.4 Patterned colours

A. Dots



B. Gears

